

# ORLUTI WALL PANEL

---



TW15-154F1



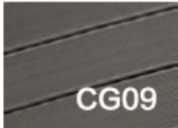
TW15-154H2



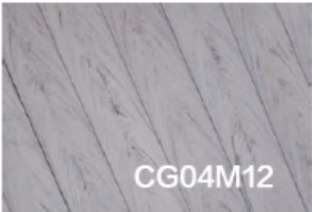
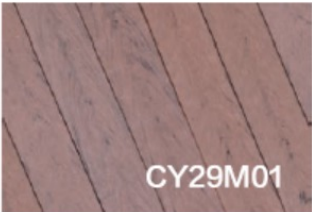
# COLOR OPTION

---

**CLASSIC COLOR:**



**MIX COLOR:**



# SURFACE TREATMENT

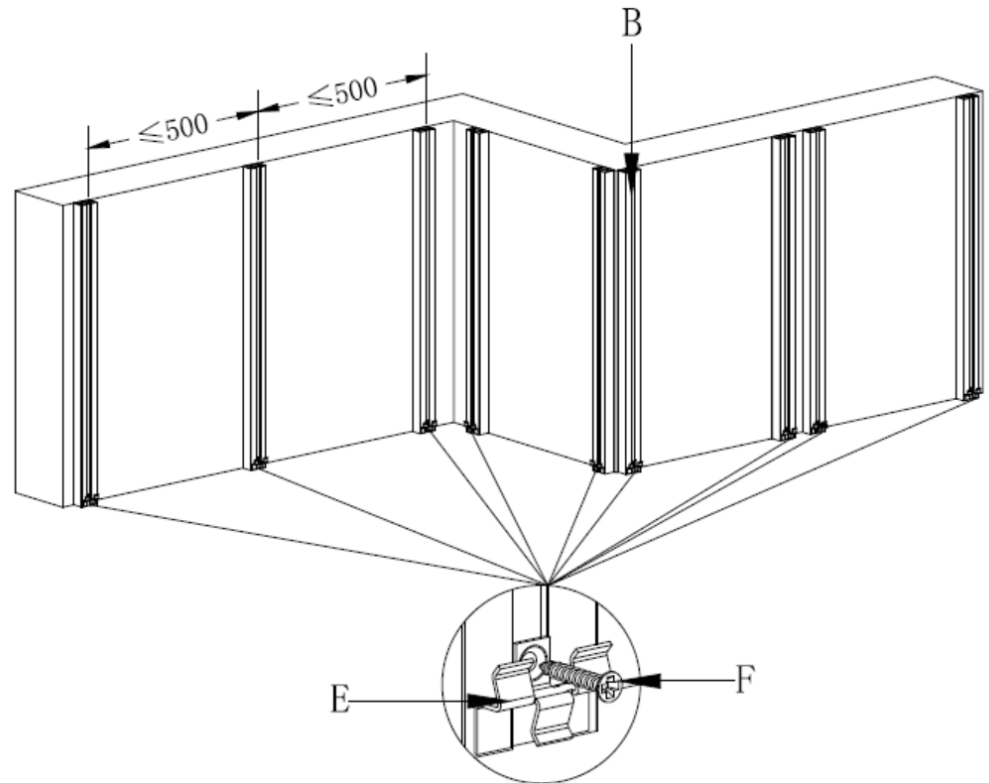


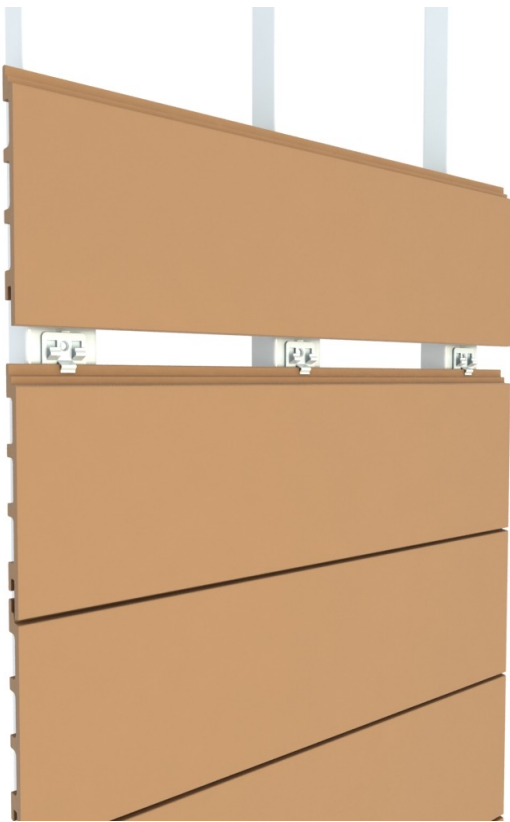
# INSTALLATION GUIDE

Step1: Fix aluminum joists on the wall with 5x60 screws.

The span of the aluminum joists should be  $\leq 500\text{mm}$ .

Be aware of material extension and leave always enough space to object  $\geq 10\text{mm}$ .

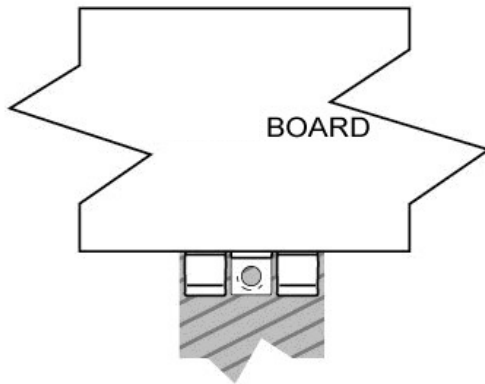




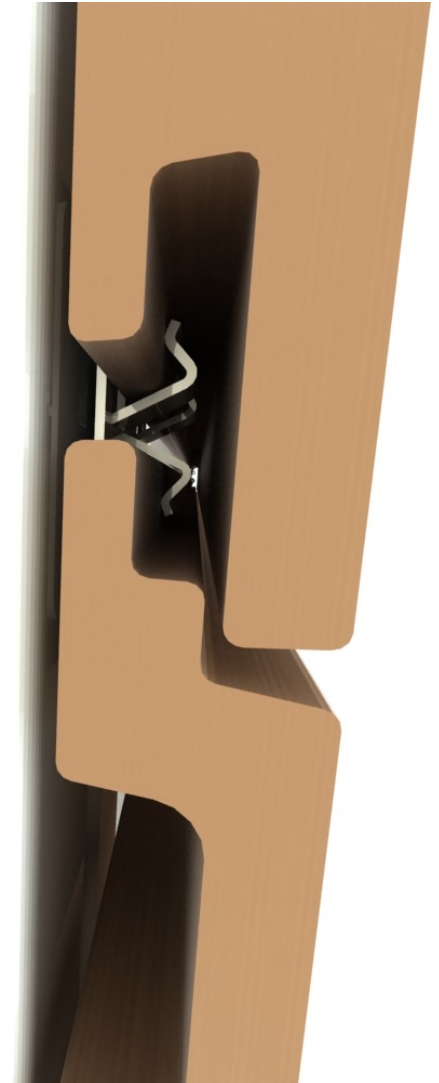
### Step2:

we recommend using 4\*30 mm ( Minimum ) Self-tapping screws for use with our hidden fixing clips.

Fully insert the hidden clips into edge of plank, screw hole should be lined up with the center of support joist.



Ensure that the counter sunk section of the hidden clip is exposed as in the diagram below.





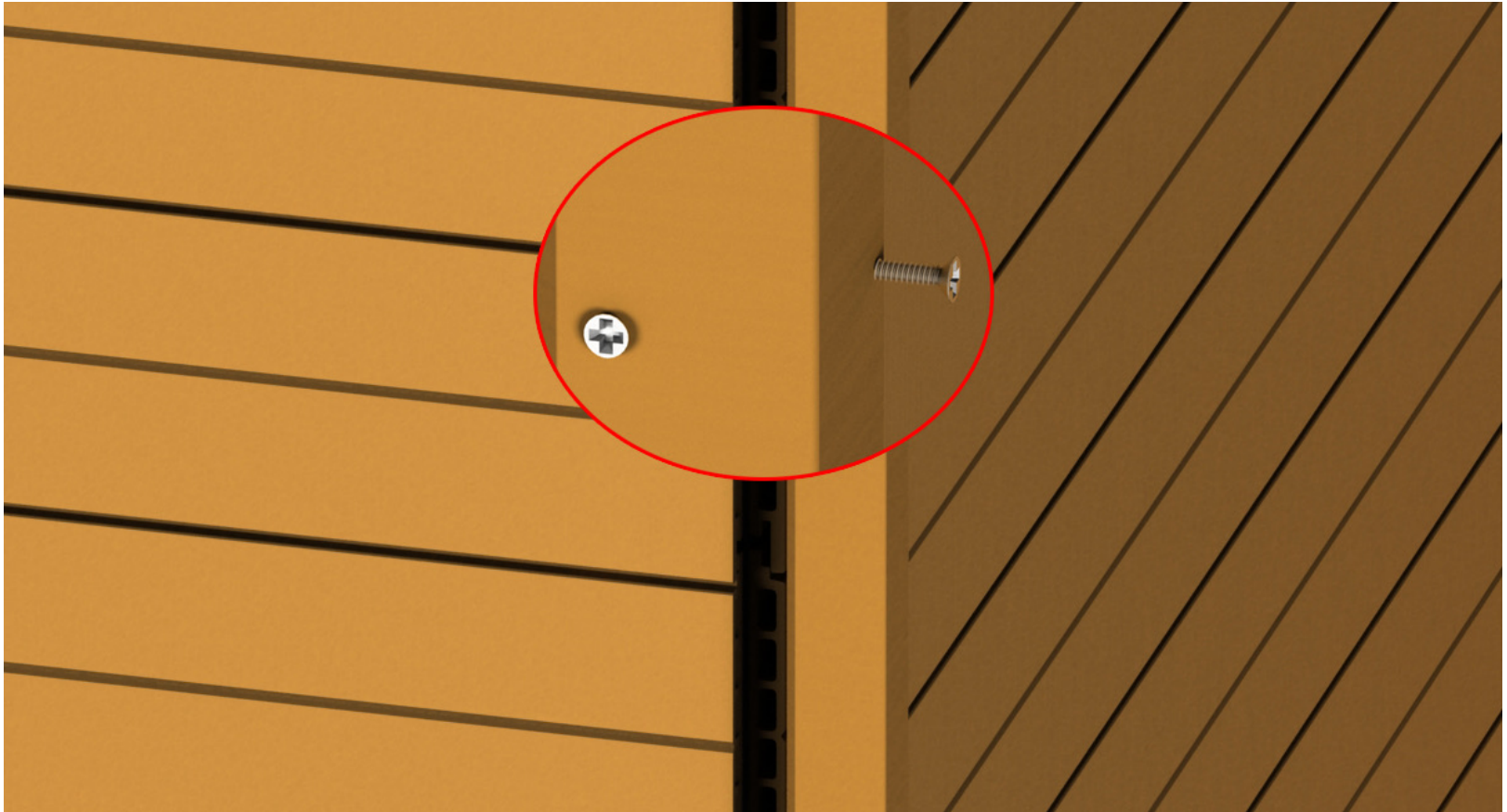
### Step3:

Place the next plank into position against the hidden clips. Slightly slide it onto the hidden clip until the plank contacts the spacer tab.

A light hand tapping may be required.

Make sure  $\geq 5\text{mm}$  between end to end of the planks.





#### Step4:

The “L” shape skirting profile can be used vertically to hide the corner and edge of the planks.

This profile must be fixed with 50mm screws.

Only fix the screws on one side, not two sides of the “L” shape profile.

