

CRDD

MOTORIZED PERGOLA

© edition 2017



Why ORLUTI

ORLUTI Opening Roof System is constructed entirely from aluminum and stainless steel. It has been specifically designed to meet all environments, especially the harsh demands of coastal environment. ORLUTI Opening Roofs, also known as louvered roof system is provided by CRDD who is dedicated to offer unique and perfect roofing solutions catering for a variety of customer demands in the market today. The ORLUTI Opening Roof takes control of sun, shade and light as well as providing ventilation and rain protection. It's ideal for any outdoor living area such as patios, decks, verandas, courtyard outdoor kitchen, swimming pools etc.





Features And Benefits



130 Degree Rotation

The LUX Series is the weatherproof louvre system that has nearly 130 degree rotation. At the push of a button it gives you complete control over sun and shade.

Light Control

The louvres can be tilted to desired angle to reflect the right amount of natural light into a building, illuminating the area without the need of electrical lighting, thus providing energy saving.

Heat Control

The Opening Roof can be turned to the desired direction with handheld remote control to prevent direct sunlight falling on your outdoor entertainment area thus preventing unwanted solar heating which in turn will save you on the air-conditioning bills.

Solid Aluminum Construction

The solid aluminum louvers are extruded from architectural grade aluminum alloy at a nominal thickness 1.2mm and 2.0mm for years of trouble free service and come with a 5 year warranty.

Rain Protection

The louvers are designed such that they will automatically interlock when rainy weather develops(with the rain sensor). The louvres overlapping ensure the water tightness thus preventing any leak.

Ventilation Control

During summer days when hot air rises you can leave the louvers partially opened. Tilt the louvres such that the sun is blocked but the warm air can escape through the opening the louvers thus keeping the place cool.

Structural Description

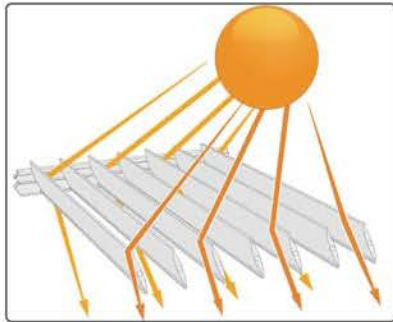
ORLUTI Opening Roof Consists of

Extruded aluminium waterproof
louver blade(with groove for lighting)
Aluminium gutters, beams, heavy-duty
internal fittings
Plastic bush, control arm
Motor arm connector
Blade end cap, pivot bolt
Custom made bracket
Inbuilt downpipe
Posts and base plate
Electric motor, rain wind light sensor
Electric heater(optional)
Motorised side screen(optional)



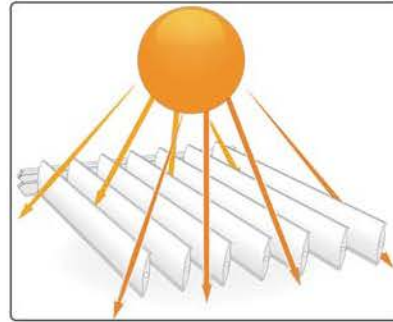


How It Works



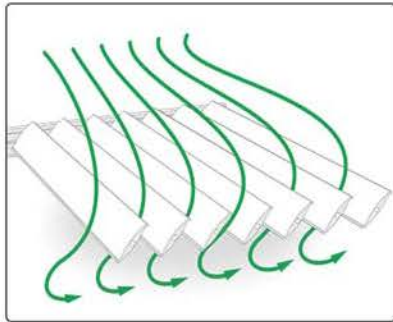
Open at an Angle

Hot air rises you can leave the louvres partially opened. Tilt the louvres such that the sun is blocked but the warm air can escape through the opening at the louvres thus keeping the place cool.



Fully Open

In winter or cooler weather enjoy the natural warmth of sunlight by tilting the louvres to the desired angle with the fingertip touch of your remote control.



Ventilation

With louvres opened at a desired angle, protection is still provided for light rain meanwhile ventilation and shade protection is still achieved.



Closed for Heavy Rain

Louvres are designed such that they will interlock to keep out the weather. Deep channels in each louvre carry water away to the in-built surrounding gutter.

Desired Angles



0° Fully Closed



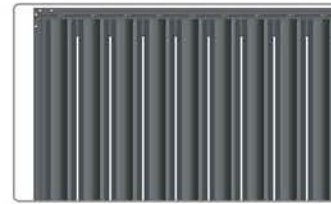
45° Partially Open



100° Fully Open



0° Fully Closed



45° Partially Open



100° Fully Open

Selective Colors

(Color can be customized for wholesale)

RAL 7016 Anthracite Grey

RAL 9016 Traffic White

Louver Blade



LUX Series 202mm Louvres
Elliptical Type Specification
Width/Height: 202mm/51mm
Thickness: 2.0mm
Maximum span: 4300mm
Design: Waterproof effective

Design Options



Wall Mounted



Wall Hanging



Free Standing&Wall Mounted

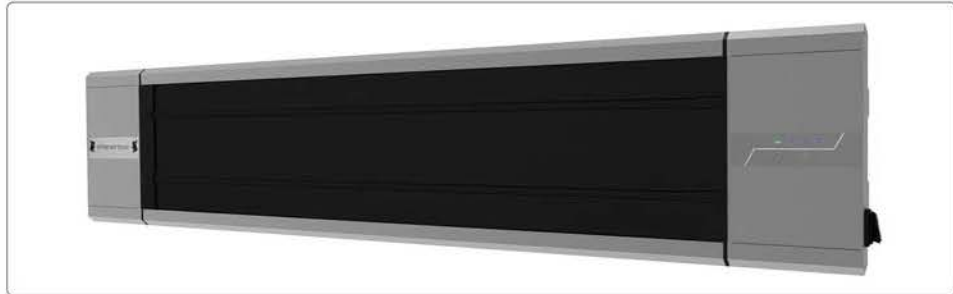


Free Standing

Optional Additions



Lighting Options



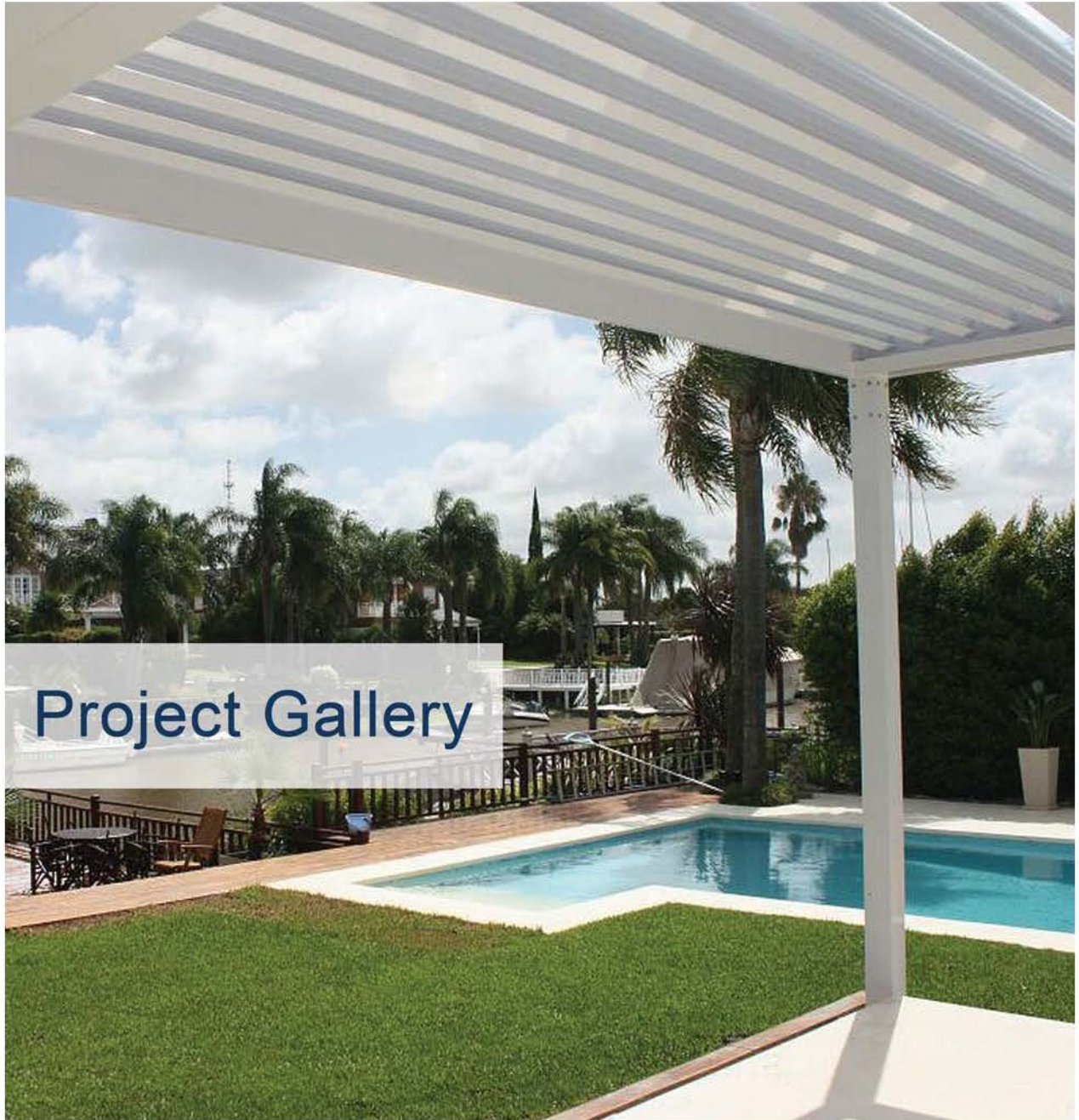
Electric Heater



Rain Wind Sensor



Motorised Side Screen



Project Gallery



Project Gallery



Before installation

Project Gallery

After installation





What is your systems made of ? ★

Our system is powder coated, extruded aluminum with stainless steel components giving us the most durable louvered roof on the market today.

What is your the longest span of your louvre? ★★★★★

There are one shapes of PERGOLUX louvre blades available. For the 202mm wide aerofoil blade of PERGOLUX, its maximum spanning capacity is 4.5m without sagging.

Can it be attached to a host structure? ★★

Yes, our system can be attached to an existing structure or erected as a free-standing unit!

What colors does your system come in? ★★★★★

The Opening Roof features three standard colors options (white and grey) that compliment almost any architecture. Available in hundreds of custom colours from RAL color chart for unique application purposes.

How it will hold up in my climate? ★★★★★

Our system has been specifically engineered to withstand hurricane force winds, heavy snow loads, and everything in between. It's durable and can outcompete most of the competitors on the market today!



What are the benefits of installing a opening roof? ★

Sunshading and rain protection. A opening roof will make the most of your outdoor space. You can have shade at the touch of a button while still being able to let the sunshine in when it is preferred. With the built in gutter system, you have shelter from the rain as well.

Are these standard size? ★★★

Not really, the opening roof system has been designed to be completely flexible so it can be customized to each project. We will assist in designing the length and direction of the louvers to best fit your area.

What is your product warranty? ★★★★★

We offer 3-5 years warranty on the structure of PERGOLUX with ordinary powder coated, along with a 1-year warranty on the electronics.

What types of features can I add to the roof? ★★★

We also offer an integrated Linear Strip LED lights system, the heater, side screen, an automatic wind/rain sensor that will automatically close the roof when it starts raining. If youy have any further ideas we encourage you to share them with us.

CRDD

Club Rodeo Designs & Developments, LLC

842 South Ogden Drive

Los Angeles, CA 90036

E-mail: marcmechaly@gmail.com

Tel: 310-648-9959

THE TEAM YOU TRUST